

WILLIAM P. ANKELE, JR.  
JENNIFER GRUBER TANAKA  
CLINT C. WALDRON  
KRISTIN BOWERS TOMPKINS  
ROBERT G. ROGERS  
BLAIR M. DICKHONER

OF COUNSEL:  
KRISTEN D. BEAR  
K. SEAN ALLEN  
GEORGE M. ROWLEY



ZACHARY P. WHITE  
TRISHA K. HARRIS  
HEATHER L. HARTUNG  
MEGAN J. MURPHY  
EVE M. G. VELASCO  
ALLISON C. FOGG  
LAURA S. HEINRICH  
AUDREY G. JOHNSON  
LISA CANNON

December 21, 2020

**VIA ELECTRONIC SUBMISSION  
AND ELECTRONIC MAIL**

Division of Local Government  
*E-filed via [www.dola.colorado.gov/e-filing](http://www.dola.colorado.gov/e-filing)*

Adams County Clerk and Recorder  
4430 S Adams County Parkway  
Brighton, CO 80601

4430 S Adams County Parkway  
Suite C2100  
Brighton, CO 80601  
[assessor@adcogov.org](mailto:assessor@adcogov.org)

Adams County Assessor

**Re: Pomponio Terrace Metropolitan District (LGID#:66770)  
Map Filing Pursuant to §32-1-306, C.R.S. – No Change in Boundaries**

To Whom It May Concern:

Section 32-1-306, C.R.S., requires special districts to provide a current, accurate map of their boundaries to the Division of Local Government (the “Division”), County Clerk and Recorder and County Assessor by January 1 of each year. This letter is to inform you that the map that is currently on file with your office for the above-referenced District is the most current and accurate map. A copy of the current map is attached for your convenience.

Should you have any questions, please do not hesitate to contact me.

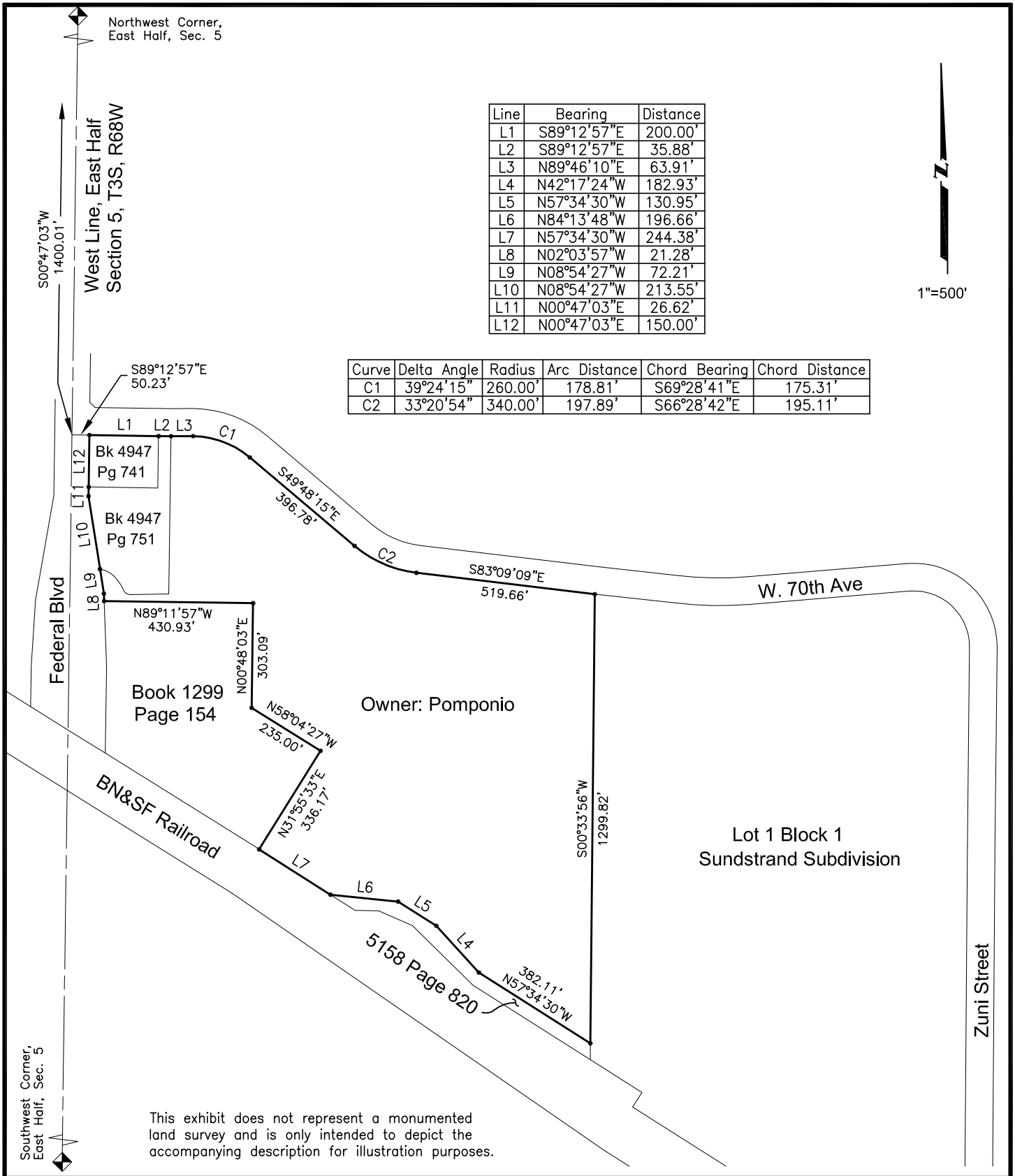
Sincerely,

WHITE BEAR ANKELE TANAKA & WALDRON  
Attorneys at Law

Brian S. Bowers, Paralegal

Enclosure

# ILLUSTRATION FOR EXHIBIT A



Line	Bearing	Distance
L1	S89°12'57"E	200.00'
L2	S89°12'57"E	35.88'
L3	N89°46'10"E	63.91'
L4	N42°17'24"W	182.93'
L5	N57°34'30"W	130.95'
L6	N84°13'48"W	196.66'
L7	N57°34'30"W	244.38'
L8	N02°03'57"W	21.28'
L9	N08°54'27"W	72.21'
L10	N08°54'27"W	213.55'
L11	N00°47'03"E	26.62'
L12	N00°47'03"E	150.00'

Curve	Delta Angle	Radius	Arc Distance	Chord Bearing	Chord Distance
C1	39°24'15"	260.00'	178.81'	S69°28'41"E	175.31'
C2	33°20'54"	340.00'	197.89'	S66°28'42"E	195.11'



This exhibit does not represent a monumented land survey and is only intended to depict the accompanying description for illustration purposes.

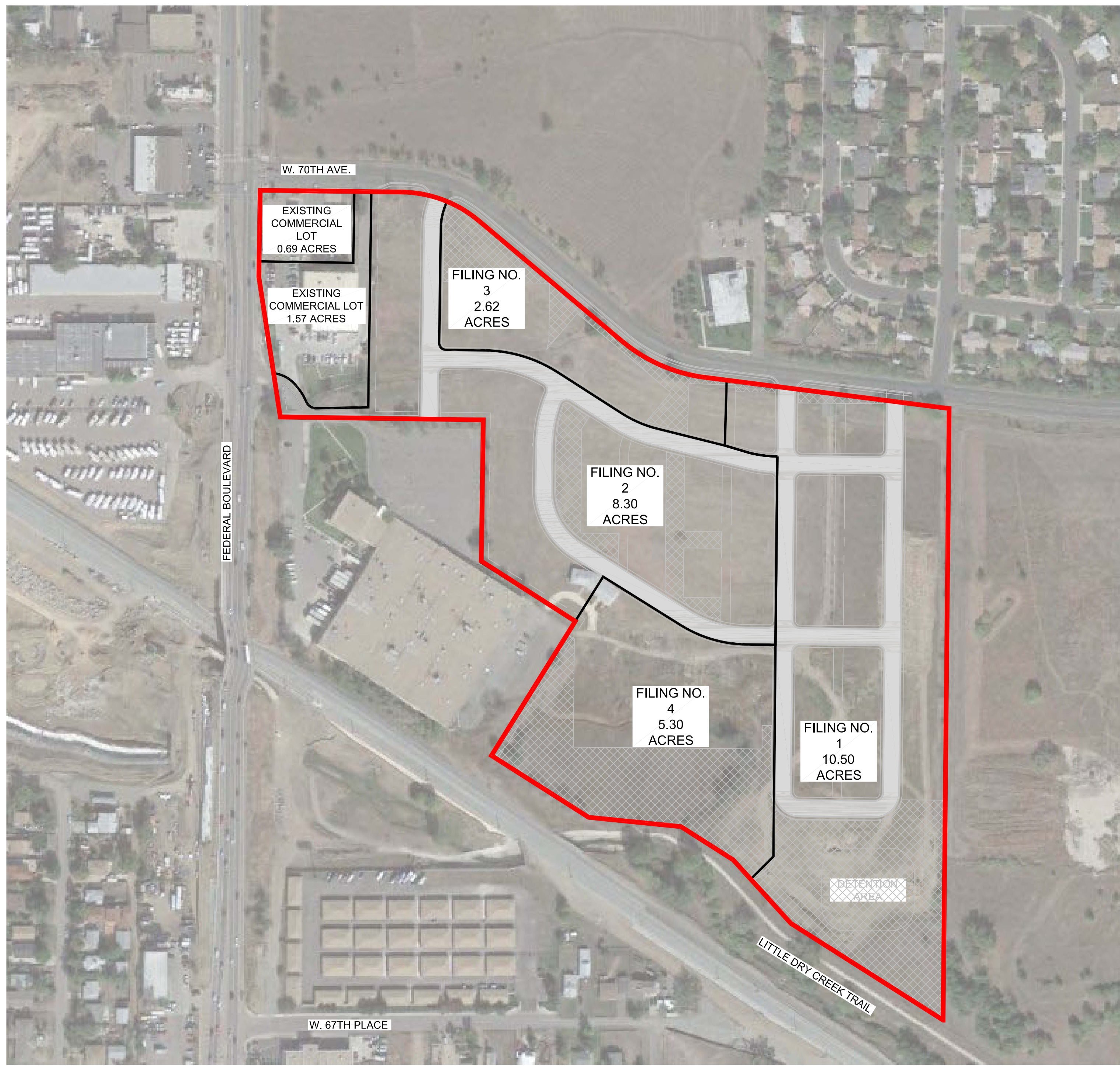
**FWS** FORESIGHT WEST SURVEYING INC.  
 4955 Iris Street, Wheat Ridge, CO 80033  
 (303) 504-4440

**DISTRICT EXHIBIT**  
 East 1/2 Sec. 5, T3S, R68W  
 Adams County, Colorado

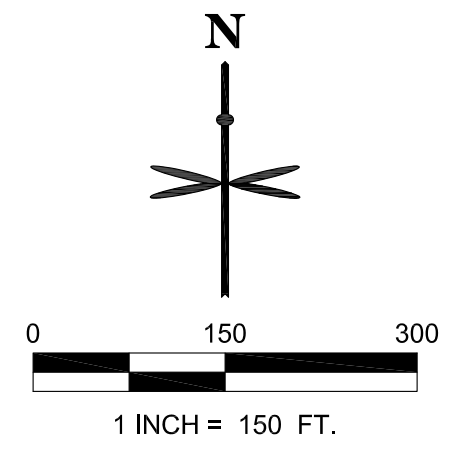
Compiled by: L JL  
 Date: 13 Jan '16  
 Page: 1 of 1

J:\Project #s\2016-Jobs\2016004.2-Pomponio Terraces-Metro District Set Plan\2016004.2-CAD\2016004.2 Service Plan.dwg, Sheet 1, 1/13/2016 1:08:08 PM, Illudeman





2/23/2016 4:54 PM P:\NTL HOLDINGS\POMPONIO TERRACE ONSITE\06 CADIMETRO DISTRICT BOUNDARY MAP.DWG © 2016, ALL RIGHTS RESERVED.



LGID# 66770



### LEGEND

-  SERVICE AREA BOUNDARY/FUTURE INCLUSION AREA
-  FILING BOUNDARY
-  DEVELOPMENT AREA USED FOR COMMON MAIN ACCESS
-  DEVELOPMENT AREA USED FOR OPEN SPACE

518 17th Street  
 Suite 1575  
 Denver, CO 80202  
 www.ees.us.com  
 303-572-7997



**POMPONIO TERRACE**  
 ADAMS COUNTY, COLORADO  
**METRO DISTRICT BOUNDARY MAP**

PROJECT NO: PTH001.01  
 DESIGNED BY: SPM  
 DRAWN BY: SPM  
 DATE: 01/12/2016